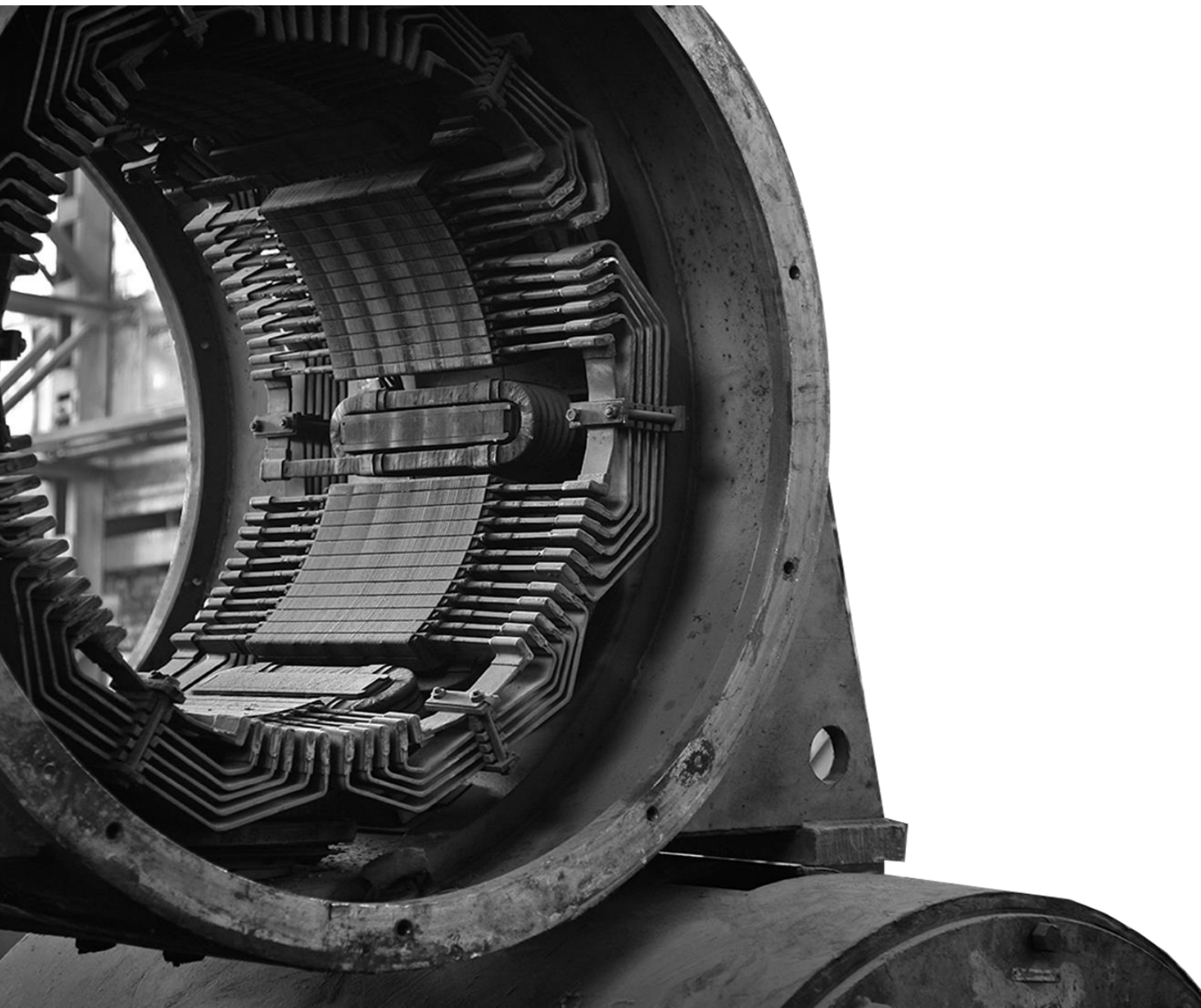


## Company Profile and Capability Statement



## SECTION 1 – KENSHAW ELECTRICAL PTY LTD

### 1.1 Company Overview

Kenshaw Electrical Pty Ltd provides electrical and mechanical services in the areas of:

- Electric Motor Rewinds and Rebuilds
- New Electric Motors, Motor Audits & Motor Management System (MMS)
- Generator Sales, Installations, Repairs and Upgrades
- Generator Preventative Maintenance and Servicing
- Non Destructive Testing
- Condition Monitoring
- Electrical and Mechanical Testing Services

We predominantly serve the mining, power generation, telecommunications, commercial, health, industry, infrastructure and emergency services industries.

From our head office established in Newcastle during the year 1990 Kenshaw provides regular service to clients throughout Australia. Our success is due to highly-skilled and dedicated staff, quality workmanship and ongoing apprentice training programs, which ensure that we have a strong and growing, team of highly-skilled tradespeople operating on our simple philosophy: to provide professional excellence with integrity.

### 1.2 Partnership Approach

We prefer to take a long-term partnership approach with our clients, often committing to long-term/multi-year maintenance contracts where possible, aligning our goals with the goals of our clients. We seek to build a relationship of trust with our clients.

### 1.3 Our Commitment

- We will manage our business in a socially responsible manner
- We will provide excellence in health, safety and environmental performance on all client sites
- We will provide optimal performance and accountability
- We will maintain detailed occupational health and safety policies and quality assurance systems
- We will work towards a goal of zero harm to employees, contractors and any other dangerous on-site activity.

### 1.4 Product and service capability

Kenshaw Electrical Pty Ltd provides a wide range of services across the lifecycle of electrical and mechanical equipment.

#### Kenshaw Electrical Pty Ltd.'s electrical and mechanical service lifecycle



From initial sourcing and customisation of the right motors and generators, to their installation and regular servicing, to testing the equipment to ensure that it is performing optimally and any issues are identified ahead of time, to 24/7 repair work on site or in our fully equipped workshops, Kenshaw Electrical Pty Ltd can deliver effective products and services at reasonable prices.



## 1.5 Clients

- ARTC      ■ Delta Electricity      ■ Hunter Water      ■ HNEH
- Integra Coal      ■ John Holland      ■ Macquarie Generation      ■ OneSteel
- PWCS      ■ Royal North Shore Hospital      ■ Molycop      ■ Tenix
- Thiess      ■ Transfield      ■ Wesfarmers      ■ Glencore
- Ansaldo      ■ Rio Tinto      ■ NCIG      ■ Hanson

## 1.6 Kenshaw Electrical Pty Ltd Pty Ltd key personnel

- Brad Hughes      General Manager – Kenshaw & NDT Services Group
- Ian McInnes      Operations Support Manager – Kenshaw & NDT
- Adam Malcolm      NDT Services Group Manager
- Graham French      Workshop Supervisor – Electrical & Mechanical
- Gary Wills      Power Generation Manager
- Chris Raine      Service Coordinator
- Barry Brosi      Sales Manager – Products & Services
- Sam Breaden      Sales Engineer – Electrical & Mechanical

## 1.7 Work, Health, Safety and Environment (WHSE)

WHSE practices are core to everything we do at Kenshaw Electrical Pty Ltd. We value the health and safety of our personnel above all else. We also believe that safety is a good indicator of the quality of the management and operations of a business, as well as the attitude of its staff. As such, WHSE practices are always considered in our decision-making process, business practices and daily activities.

We are committed to a healthy and safe workplace as well as continuous improvement. We are committed to:

- complying with all legal requirements and regulations, standards and codes of practice applicable to our operations
- applying and continually improving our health & safety management systems
- Identifying, registering, assessing and controlling hazards with a systematic approach
- Developing objectives and programs to achieve them
- Informing, training and maintaining the competencies of our employees
- providing and maintaining safe systems of work, keeping workplaces in safe, healthy and tidy conditions
- consulting and engaging our employees and contractors, promoting leadership and teamwork
- conducting internal and external audits of the operations, policies and safety management systems, and developing corrective actions for any gaps identified.

Kenshaw Electrical Pty Ltd.'s management is accountable for the implementation and review of this policy and its commitments. We make safety a core condition of employment and unsafe behaviours are not tolerated.



## 1.8 Core Safety Values

### Safety First to Last, no Compromise

These values are core to Kenshaw Electrical; they are not negotiable and underpin our daily work life. Everyone at Kenshaw Electrical is committed to adhering to these values for not only themselves and colleagues, but also to any other sub-contractor we may use or anyone that comes onto one of our worksites.

- **Fit for Work**  
Never attend work under the influence of drugs, alcohol or fatigue
- **Mechanical Lifting/Suspended Loads**  
I will never place myself or others under a suspended load
- **Electrical Energy**  
I will not work on live electrical circuits unless authorised and trained
- **Isolation**  
I will always isolate and verify wherever the chance of energy release is possible
- **Working with Hands & Hand Tools**  
I will exercise care whenever working with my hands
- **Working at Height**  
I will not work above 1.8m without fall arrest equipment
- **Manual Handling**  
I will find a solution that prevents injury
- **Motor Vehicles | Plant & Equipment**  
I will always obey all road and site specific rules when operating motor vehicles, plant and equipment.
- **Risk Assessment**  
I will assess the risks and hazards before starting any job to ensure adequate controls are put in place to prevent injury and /or negative impacts to the environment.
- **Reporting**  
I will report any safety and / or environmental incident via the correct channels and ensure that it is followed through to completion.

## 1.9 Quality Assurance

### ISO 9001:2008 Accredited 2013

Kenshaw Electrical and NDT Services Group provide specialised services catering for Coal Mines and Coal Handling Preparation Plants, Gravel Quarries, Mineral Processing Industries, Schools, Defence Industries, Water Industries, Engineering Enterprises, Process Control Operations and smaller manufacturing and commercial enterprises.

We are committed to comply with requirements and to continually improve the effectiveness of the management system to ensure sustained profitable growth.

To achieve this aim we have established an integrated management system that is based on the requirements of ISO 9001, AS/NZS 4801 and AS/NZS 14001.

In 2013 as a result of Kenshaw's established and rigorous quality management system Kenshaw Electrical Pty Ltd and NDT Services Group were given ISO9001:2008 accreditation.



## SECTION 2 – ELECTRIC MOTORS



### 2.0 Overview

Kenshaw Electrical was originally formed to provide service rather than sell products. However, from the very beginning of our business, many of our clients wanted more than just services. Kenshaw Electrical Pty Ltd developed our sourcing and installation capabilities in response to that customer demand.

We now have almost 20 years experience sourcing the right motors, generators and electrical and mechanical equipment for our clients. We stock a large range of motors, generators and related equipment in-house, and can quickly source products from a range of providers at attractive prices.

You can be sure, that in addition to being able to remove the old, install the new, service, test and repair your equipment, we stand behind the equipment we source.



### 2.1 Electric Motors & related equipment

Kenshaw Electrical Pty Ltd is one of the largest stockists of electrical motors in NSW outside of Sydney. We are proud to be an agent of WEG and authorised distributor of TECO, FASCO electric motors and Bonfiglioli Gearboxes.

At our Cardiff warehouse we stock electric motors starting from 0.18kw up to and including 250kW. In addition to our electric motor stocks, we carry TECO contactors and overloads, DOL starters, variable-frequency drives (VFDs), and Invicta Vibrators.

We compliment our stocks by being able to competitively source and supply products by a wide range of other manufacturers but not limited to:-



- |                  |             |               |
|------------------|-------------|---------------|
| ■ WEG            | ■ Baldor    | ■ Toshiba     |
| ■ CMG            | ■ Ebm Papst | ■ Torin       |
| ■ Teco           | ■ Cummins   | ■ Leroy Somer |
| ■ Invicta        | ■ Powerlite | ■ Bonfiglioli |
| ■ Lenze          | ■ Mayr      | ■ SEW         |
| ■ Brook Crompton | ■ Lafert    | ■ Pope        |



Our products include:

- Three phase electric motors
- Single phase motors
- DC motors
- Motor controls
- Air movement motors and fans
- Brakes
- Geared motors and gearboxes



## SECTION 3 – ELECTRICAL & MECHANICAL SERVICES

### 3.1 Core Competencies

Servicing electrical and mechanical equipment is the core of what we do at Kenshaw Electrical. We are deliberately multi-disciplinary — we seek to offer a very wide range of services to cater to a wide range of customer needs.

Most of our business is repeat business, with three quarters of our clients using our services more than once each year. However, we conduct work on a project basis as required.

Kenshaw Electrical has a team capable of providing agreed service response time 24 hours a day, 7 days week. We have a fleet of vehicles ranging from fully equipped utility vehicles up to 7 tonne trucks. Our team provides services that include:

ELECTRICAL	MECHANICAL
■ Electric motor and Generator maintenance and breakdown services	■ Plant maintenance
■ Motor control and protection systems	■ Generator Installations
■ Engineering and Design	■ Gearbox repairs
■ (MMS) Motor Management System	■ (MMS) Motor Management System
■ Testing / Condition Monitoring	■ Testing / Condition Monitoring
■ VF Drives	■ Dynamic Balancing
■ Emergency Power installations	■ Diesel Mechanics
■ UPS installation and maintenance	

We also provide a full range of testing/condition monitoring services, including vibration and oil analysis, thermal imaging, motor signature analysis and corrective actions such as laser alignment, onsite balancing, mechanical and electrical auditing all to improve your plant efficiency, reliability and avoid unscheduled downtime resulting in production losses.



### 3.3 Workshop

Kenshaw Electrical has two workshops co-located in Cardiff (Newcastle) NSW. From these workshops we are able to provide a huge range of products and service to our clients.



Repairs and modification options for AC & DC motors include:-

- Stator Rewinds including redesign
- Modify and upgrade motor to customer specifications
- Machining and modifications to shafts
- Modification for purpose built machines
- Supply and fit electric brakes AC/DC
- Tropic Proofing
- IP Rating Upgrades
- Rewinding armatures and repairing/replacing commutator
- Re-lamination and insulation of armature stacks
- Rebuilding / replacing of damaged brush holders
- Rewind slip ring rotors including lamination repair and rebuild



### 3.4 Dynamic Balancing

Kenshaw Electrical offers dynamic balancing using Dyna Balance equipment. Dynamic Balancing of:

- Rotors & Armatures
- Fans
- Impellers
- Machine Spindles
- Propeller Shafts
- Rollers



### 3.5 Testing Services

- AC & DC testing capability
- Load Testing up to 250Kw 4pole & 400Kw 2pole
- Core Loss Testing
- Surge & Hi-Pot testing

### 3.6 Other Services

- VPI – Vacuum Pressure Impregnation
- Gearboxes
- Eddy current drives
- Generators and generator welders
- MG sets
- Magnets
- Coils and Transformer Repairs



## SECTION 4 - GENERATORS

### 4.0 Overview



Kenshaw Electrical Pty Ltd stocks many brands of generators both new and used. Our range includes single and three phases – Open and Sound attenuated units. We are also proud to be an authorised distributor of Cummins Generators.

Emergency power supplies or backup generators are our specialty. Our fully qualified staff can design, supply, install and maintain your generator system to Australian standards.

Kenshaw Electrical design systems to meet individual specifications. We offer standard manufactured units and specifically designed machines as required. Kenshaw also has a range of generators for long or short term rental periods.

Our team offers complete design to installation of generators from 1kVA through to 5000kVA, multi unit projects and mechanical installations.

We can also offer an extensive range of used equipment where requested.

We complement our stocks by being able to competitively source and supply products by a wide range of other manufacturers but not limited to:-

- Kohler
- FG Wilson
- Jubilee Energy



### 4.1 Turn-key supply, build and maintain services

We provide high quality tailored supply, installation and maintenance services covering all aspects of the project from start to finish:

- Site inspection
- Customer requirement survey / audits
- Design
- Flexible site installation options – including load banks and bulk fuel facilities
- Accessories options
- Canopy Repairs
- MDG15 Generator Upgrades – DPI Standards
- Site delivery & installation
- Commissioning
- Maintenance and servicing programs
- Installation and Servicing of (UPS) Uninterrupted Power Supply Systems



## SECTION 5 – NDT Services Group

A Kenshaw Company

### 5.0 Overview

NDT Services Group is an independent, non destructive testing and condition monitoring servicing company specialising in electrical and mechanical testing services.

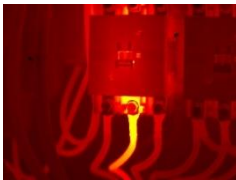
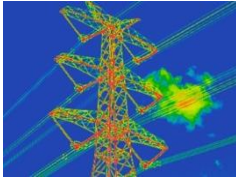
NDT Services Group has major clients in steel, cement, pulp and paper, mining, water, power generation, aluminium, materials handling, defence, local government, chemical, automotive, forestry, and food / beverage and construction industries.

NDT Services Group offers the following extensive range of electrical and mechanical services:-

- Thermal Imaging
- Electric Motor Testing / Inspections
  - Symmetry – Resistance / Inductance
  - Insulation Resistance
  - DC – Hipot – Step Voltage
  - Polarisation Index
  - On-Line and Offline Partial Discharge
  - Dielectric Dissipation Factor
  - AC and DC Voltage Drop
  - Current Spectrum Analysis
  - Instantaneous Power Analysis
  - Current In-Rush
  - Capacitance
- Vibration Analysis
- Grease / Oil Analysis
- Laser Alignment
- On-Site Balancing
- Ultrasonic Inspections
- Power Factor Correction
- Energy Audits
- NATA accredited Crack testing
- Ultrasonic Thickness Testing



Reduce risk, improve asset life



## 5.0 Contact & Organisational Details

**Kenshaw Electrical Pty Ltd**  
**ABN: 88 002 274 160**  
**PO Box 134 Cardiff NSW 2285**  
**9 Belford Place Cardiff NSW 2285**

**Office:** 02 4903 1500  
**Fax:** 02 4954 8228  
**24/7:** 1300 133 390  
**Email:** [info@kenshaw.com.au](mailto:info@kenshaw.com.au)  
**Web:** [www.kenshaw.com.au](http://www.kenshaw.com.au)

### Key Personnel

Brad Hughes  
General Manager – Kenshaw & NDT Services Group  
[bradhughes@kenshaw.com.au](mailto:bradhughes@kenshaw.com.au)

Ian McInnes  
Operations Support Manager – Kenshaw & NDT Services  
[ianmcinnes@ndtservicesgroup.com.au](mailto:ianmcinnes@ndtservicesgroup.com.au)

Adam Malcolm  
Manager – NDT Services Group  
[adammalcolm@ndtservicesgroup.com.au](mailto:adammalcolm@ndtservicesgroup.com.au)

Barry Brosi  
Sales Manager - New Motor Products and Services  
[barrybrosi@kenshaw.com.au](mailto:barrybrosi@kenshaw.com.au)

Sam Breaden  
Sales Engineer – Electrical & Mechanical  
[sambreaden@kenshaw.com.au](mailto:sambreaden@kenshaw.com.au)

Graham French  
Workshop Supervisor – Electrical & Mechanical  
[grahamfrench@kenshaw.com.au](mailto:grahamfrench@kenshaw.com.au)

Gary Wills  
Manager – Power Generation  
[garywills@kenshaw.com.au](mailto:garywills@kenshaw.com.au)

Ian Tuck  
Power Generation – Estimator  
[iantuck@kenshaw.com.au](mailto:iantuck@kenshaw.com.au)

Chris Raine  
Service Coordinator  
[chrisraine@kenshaw.com.au](mailto:chrisraine@kenshaw.com.au)

Brooke Simmonds  
Accounts Payable & Receivable  
[brookesimmonds@kenshaw.com.au](mailto:brookesimmonds@kenshaw.com.au)

